

# ROWLAND UNIFIED SCHOOL DISTRICT

## RORIMER ELEMENTARY

### Scope of work for exterior painting

#### SCOPE OF WORK:

Exterior painting of the Office Building, MPR/Café Building, K Building, and portables A, B, C, D, 19, 20, 21, 22, 23, 24, 25, 26, 27, 28, 29, 30, handball walls east and west sides; 3 planters on east side, 4 planters on west side, shade structure, 2 metal bins on west side, 1 TUFF shed on west side, 2 sheds on the south side, and all existing painted areas. This includes the stucco, trim, vents, doors (both sides), exposed conduit, and

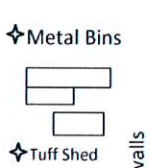
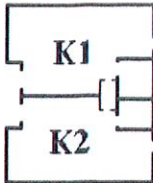
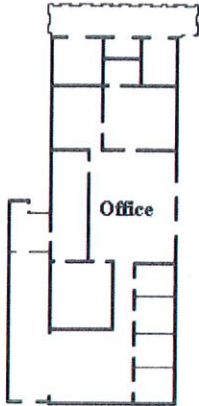
#### SEE ATTACHED SPECS.

Services will include the below services. To prepare all surfaces to be painted by power washing, scraping loose paint, sanding, caulking, patching holes and cracks on wood and stucco, priming, masking windows, covering plants and shrubbery. Prime all non-surfaces and apply two finish coats. Primer to be white, first coat to be 60% tint, then final coat and inspected between coats by District personnel.

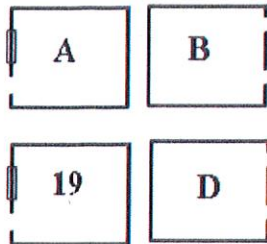
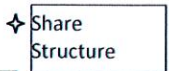
- 1) Pressure wash the stucco, siding and trim to remove dirt and debris.
- 2) Properly prepare and paint stucco and block on Office Building, MPR/Café Building and K-Bldg, Ballwall Color on east and west sides to be Dunn Edwards Spartashield Ext. flat SSL 10-0 Indian White. Color on lower block wall to be Dunn Edwards Evershield Ext. semi-gloss 7366 Blue Suede Shoes.
- 3) Properly prepare, prime and paint siding on Portables A, B, C, D, 19, 20, 21, 22, 23, 24, 25, 26, 27, 28, 29, and tuff shed Color to be Dunn Edwards Evershield semi-gloss Indian White. All wood siding to be pried and rolled (two coats).
- 4) Properly prepare, prime and paint (two coats) on all trim, door jambs, vents, and panels on Office Building, MPR Building, K-Bldg and Portables A, B, C, D, 19, 20, 21, 22, 23, 24, 25, 26, 27, 28, 29. Color to be Dunn Edwards Evershield semi-gloss 7366 Blue Suede Shoes.
- 5) Properly prepare, prime and paint all doors (both sides, two coats). Color to be Dunn Edwards Aristoshield Ext semi-gloss 7366 Blue Suede Shoes.
- 6) Prime and paint all exposed conduit, electrical boxes and electrical panels on Office Building, MPR Building, K-Bldg and Portables A, B, C, D, 19, 20, 21, 22, 23, 24, 25, 26, 27, 28, 29. Color to match background color.
- 7) Properly prepare, prime, and paint (two coats) on wrought iron fencing between Office and K-Bldg. Color to be Dunn Edwards Aristoshield Ext. semi-gloss 7366 Blue Suede Shoes
- 8) Leave murals
- 9) Have control card at store where material is purchased.

**ALL WORK TO BE COMPLETED IN 30 CALENDER DAYS FROM NOTICE TO PROCEED.**

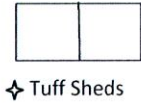
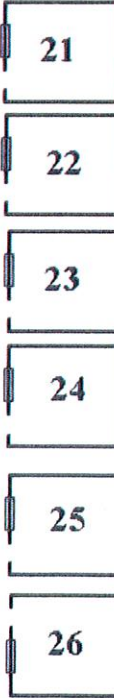
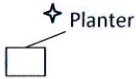
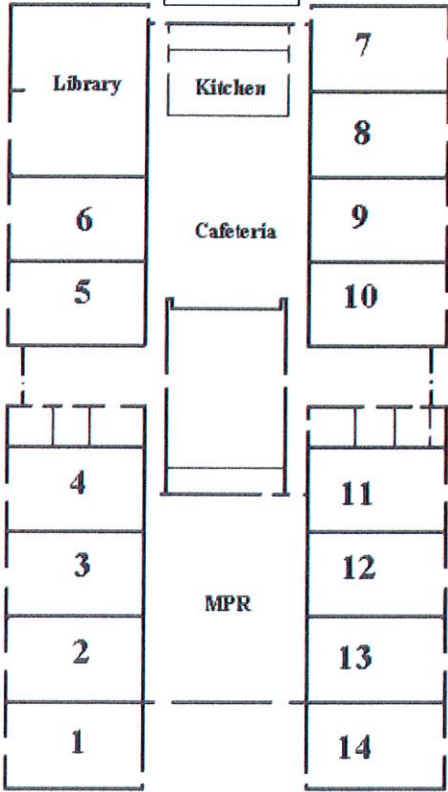
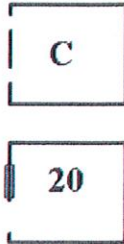
**For any questions, call Danny Romo cell #626-712-7279 or Chris Ferraro cell #626-712-7267**



Seating walls



Planters



## Dunn-Edwards

163 11:41 2/14/2019 HACIENDA HEIGHTS

### BLUE SUEDE SHOES 7366(LIGHTER ASHL50-0 ARISTOSHL IN/EX S/G

1 Gallon M Y Notation /48

11: 1 Y+ 41.775

13: 1 Y+ 44.175

14: 2 Y+ 36.000

ROWLAND SCHOOL DISTRICT

Custom Tinted Paint - Not Returnable for Exchange or Refund  
Color may vary slightly from a color chip or container to container.  
Check for correct color match and confirm color before application.  
Dunn-Edwards accepts no responsibility for any mis-matched paint  
after it has been applied. NOTE (A)=ALKALI & (I)=INTERIOR ONLY

## Dunn-Edwards

163 11:40 2/14/2019 HACIENDA HEIGHTS

### BLUE SUEDE SHOES 7366(LIGHTER EVSH50-3 EVERSCHILD EXT S/G

1 Gallon M Y Notation /48

11: 1 Y+ 41.775

13: 1 Y+ 44.175

14: 2 Y+ 36.000

ROWLAND SCHOOL DISTRICT

Custom Tinted Paint - Not Returnable for Exchange or Refund  
Color may vary slightly from a color chip or container to container.  
Check for correct color match and confirm color before application.  
Dunn-Edwards accepts no responsibility for any mis-matched paint  
after it has been applied. NOTE (A)=ALKALI & (I)=INTERIOR ONLY

## Dunn-Edwards

163 11:43 2/14/2019 HACIENDA HEIGHTS

### INDIAN WHITE

EVSH50-3 EVERSCHILD EXT S/G

1 Gallon L Y Notation /48

04: 0 Y+ 37.875

07: 0 Y+ 1.500

13: 0 Y+ 2.625 (A)

ROWLAND SCHOOL DISTRICT

Custom Tinted Paint - Not Returnable for Exchange or Refund  
Color may vary slightly from a color chip or container to container.  
Check for correct color match and confirm color before application.  
Dunn-Edwards accepts no responsibility for any mis-matched paint  
after it has been applied. NOTE (A)=ALKALI & (I)=INTERIOR ONLY

## Dunn-Edwards

163 11:42 2/14/2019 HACIENDA HEIGHTS

### INDIAN WHITE

SSHL10-0 SPRTASHLD EX FLAT

1 Gallon L Y Notation /48

04: 0 Y+ 37.875

07: 0 Y+ 1.500

13: 0 Y+ 2.625 (A)

ROWLAND SCHOOL DISTRICT

Custom Tinted Paint - Not Returnable for Exchange or Refund  
Color may vary slightly from a color chip or container to container.  
Check for correct color match and confirm color before application.  
Dunn-Edwards accepts no responsibility for any mis-matched paint  
after it has been applied. NOTE (A)=ALKALI & (I)=INTERIOR ONLY

## Dunn-Edwards

163 11:44 2/14/2019 HACIENDA HEIGHTS

### UGPR00-1 ULTRA-GRIP PREMIUM

1 Gallon L Y Notation /48

14: 2 Y+ 0.000

Custom Tinted Paint - Not Returnable for Exchange or Refund  
Color may vary slightly from a color chip or container to container.  
Check for correct color match and confirm color before application.  
Dunn-Edwards accepts no responsibility for any mis-matched paint  
after it has been applied. NOTE (A)=ALKALI & (I)=INTERIOR ONLY